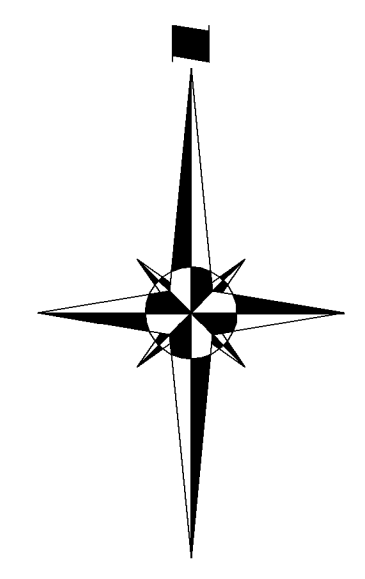
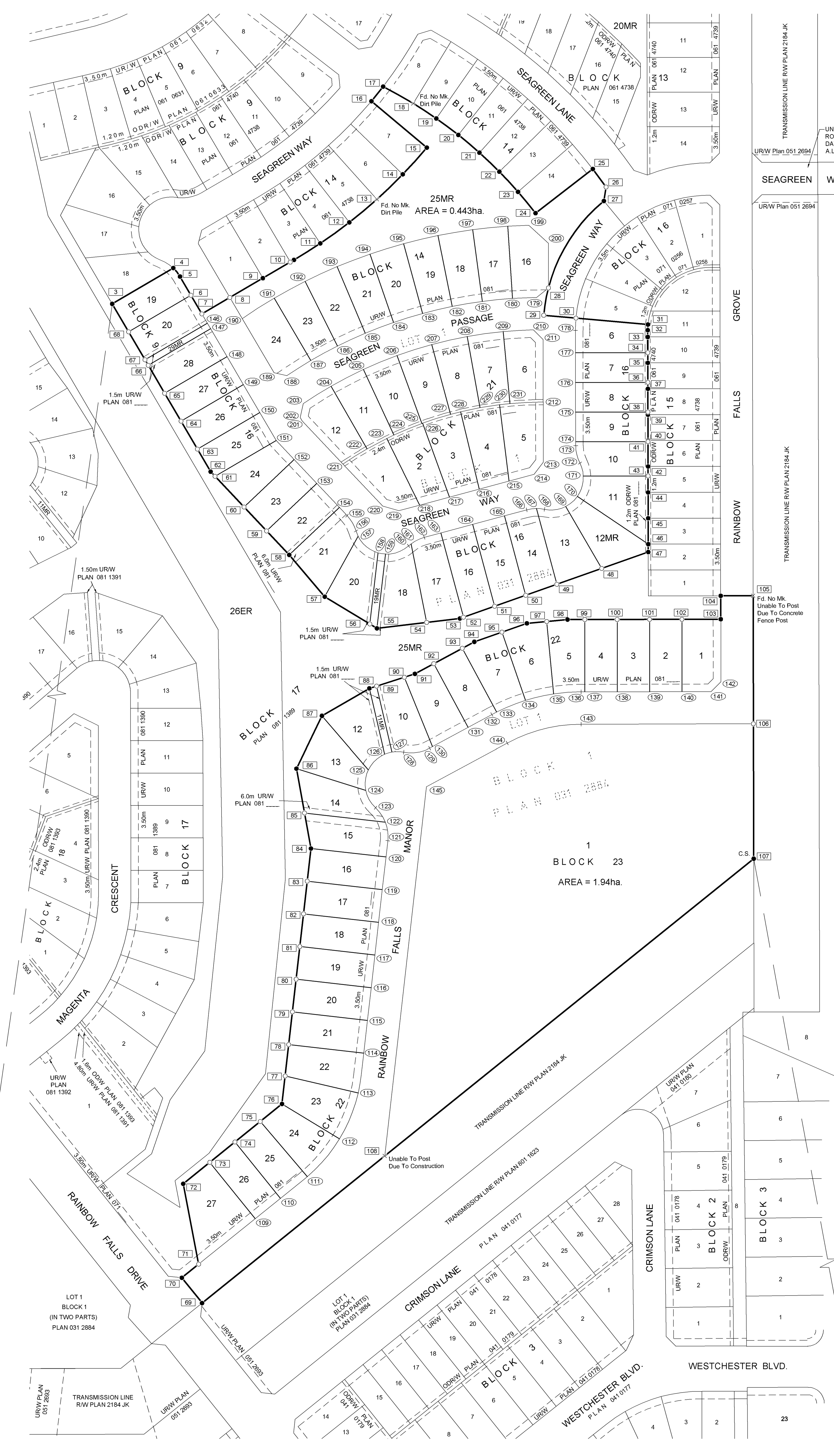


POINT NUMBER	NORTHING	EASTING	POINT NUMBER	NORTHING	EASTING	POINT NUMBER	NORTHING	EASTING
1	5654456.846	11063.108	79	5654292.723	11676.851	157	5654512.953	11707.274
2	5653469.931	12694.257	80	5654307.862	11678.566	158	5654505.285	11716.500
3	5654620.587	11593.392	81	5654323.001	11680.281	159	5654504.710	11719.956
4	5654637.178	11621.677	82	5654338.141	11681.996	160	5654508.489	11730.643
5	5654633.246	11624.795	83	5654353.280	11683.710	161	5654509.422	11731.783
6	5654624.596	11629.868	84	5654368.419	11685.425	162	5654512.426	11737.936
7	5654615.952	11634.938	85	5654384.855	11682.445	163	5654514.482	11745.582
8	5654623.540	11647.873	86	5654405.398	11678.720	164	5654518.441	11760.304
9	5654632.502	11663.154	87	5654429.787	11690.506	165	5654522.399	11775.026
10	5654639.948	11675.848	88	5654442.483	11712.485	166	5654525.164	11785.311
11	5654648.608	11689.748	89	5654443.552	11715.840	167	5654525.781	11789.903
12	5654658.364	11703.228	90	5654447.650	11728.699	168	5654525.415	11793.595
13	5654669.045	11715.989	91	5654449.204	11733.574	169	5654526.733	11803.389
14	5654680.597	11727.967	92	5654453.937	11742.339	170	5654531.436	11808.840
15	5654692.962	11739.102	93	5654461.062	11755.534	171	5654540.834	11811.583
16	5654714.484	11713.442	94	5654464.062	11761.088	172	5654546.860	11809.993
17	5654721.235	11718.863	95	5654468.568	11773.905	173	5654554.921	11808.065
18	5654713.436	11732.809	96	5654472.619	11785.430	174	5654556.671	11808.061
19	5654706.643	11743.483	97	5654473.471	11794.608	175	5654570.418	11808.027
20	5654698.852	11753.712	98	5654474.367	11804.264	176	5654584.164	11807.993
21	5654690.631	11763.458	99	5654474.386	11812.262	177	5654597.911	11807.960
22	5654681.831	11772.684	100	5654474.423	11827.258	178	5654608.328	11807.934
23	5654672.484	11781.357	101	5654474.460	11842.254	179	5654623.592	11789.930
24	5654662.626	11789.443	102	5654474.497	11857.250	180	5654623.141	11778.816
25	5654683.066	11815.973	103	5654474.541	11875.245	181	5654621.736	11764.793
26	5654674.722	11822.122	104	5654485.378	11875.218	182	5654619.403	11750.894
27	5654668.260	11821.126	105	5654485.415	11890.215	183	5654616.154	11737.180
28	5654627.994	11795.435	106	5654426.090	11890.360	184	5654612.003	11723.712
29	5654615.305	11793.239	107	5654363.686	11890.513	185	5654606.968	11710.549
30	5654613.985	11808.177	108	5654226.003	11719.601	186	5654601.071	11697.748
31	5654611.035	11841.538	109	5654196.936	11659.615	187	5654594.339	11685.366
32	5654608.410	11841.425	110	5654206.344	11671.293	188	5654587.365	11674.293
33	5654605.264	11841.433	111	5654216.400	11683.733	189	5654588.693	11668.312
34	5654597.993	11841.451	112	5654233.900	11698.648	190	5654613.788	11653.593
35	5654593.267	11841.462	113	5654255.192	11707.332	191	5654623.215	11668.401
36	5654584.246	11841.485	114	5654273.645	11709.905	192	5654631.009	11682.734
37	5654581.271	11841.492	115	5654288.785	11711.620	193	5654637.835	11697.553
38	5654570.500	11841.518	116	5654303.924	11713.335	194	5654643.664	11712.791
39	5654569.274	11841.521	117	5654319.063	11715.049	195	5654648.469	11728.383
40	5654557.277	11841.551	118	5654334.202	11716.764	196	5654652.230	11744.259
41	5654556.753	11841.552	119	5654349.342	11718.479	197	5654654.931	11760.349
42	5654545.280	11841.580	120	5654364.481	11720.194	198	5654656.558	11776.583
43	5654540.908	11841.591	121	5654371.999	11721.045	199	5654657.017	11786.360
44	5654533.283	11841.610	122	5654380.611	11719.911	200	5654648.690	11795.385
45	5654521.286	11841.639	123	5654387.252	11715.364	201	5654566.390	11681.394
46	5654509.289	11841.668	124	5654395.346	11710.824	202	5654567.948	11680.480
47	5654505.640	11841.677	125	5654404.769	11712.013	203	5654574.402	11681.894
48	5654498.038	11820.103	126	5654412.044	11719.586	204	5654582.469	11694.789
49	5654490.719	11799.331	127	5654413.048	11722.945	205	5654590.214	11709.745
50	5654485.638	11784.911	128	5654412.995	11728.400	206	5654596.657	11725.306
51	5654480.557	11770.491	129	5654414.824	11740.394	207	5654601.750	11741.360
52	5654475.476	11756.071	130	5654415.536	11741.714	208	5654605.456	11757.789
53	5654474.891	11754.411	131	5654424.468	11758.252	209	5654607.749	11774.475
54	5654473.060	11739.019	132	5654430.385	11769.210	210	5654608.566	11788.439
55	5654470.321	11715.997	133	5654431.561	11771.465	211	5654604.119	11792.948
56	5654472.313	11712.704	134	5654436.936	11784.769	212	5654575.127	11793.019
57	5654484.936	11691.830	135	5654439.922	11797.793	213	5654547.286	11793.088
58	5654504.345	11675.350	136	5654440.891	11810.561	214	5654541.619	11788.754
59	5654515.424	11664.891	137	5654440.895	11812.344	215	5654538.504	11777.169
60	5654526.502	11654.431	138	5654440.932	11827.340	216	5654534.792	11763.363
61	5654540.724	11641.004	139	5654440.969	11842.336	217	5654531.087	11749.586
62	5654542.876	11638.973	140	5654441.005	11857.332	218	5654527.375	11735.780
63	5654553.324	11632.845	141	5654441.038	11870.828	219	5654524.779	11726.126
64	5654566.259	11625.258	142	5654445.548	11875.316	220	5654526.882	11718.693
65	5654579.194	11617.671	143	5654425.895	11810.598	221	5654546.395	11700.271
66	5654592.130	11610.084	144	5654417.189	11776.335	222	5654553.413	11711.445
67	5654594.717	11608.566	145	5654397.012	11738.971	223	5654558.269	11720.572
68	5654607.652	11600.979	146	5654611.661	11637.455	224	5654559.845	11723.864
69	5654157.854	11635.004	147	5654609.074	11638.972	225	5654565.194	11736.786
70	5654169.568	11625.642	148	5654596.139	11646.560	226	5654565.341	11737.190
71	5654175.840	11633.427	149	5654583.204	11654.147	227	5654569.423	11750.116
72	5654213.100	11626.306	150	5654570.269	11661.734	228	5654570.613	11754.779
73	5654223.039	11638.587	151	5654557.333	11669.321	229	5654572.501	11763.759
74	5654232.473	11650.244	152	5654548.464	11677.694	230	5654573.877	11772.775
75	5654241.954	11661.960	153	5654537.386	11688.153	231	5654574.405	11777.614
76	5654250.098	11672.023	154	5654526.307	11698.613			
77	5654263.043	11673.489	155	5654522.548	11702.161			
78	5654277.584	11675.136	156	5654515.374	11706.310			



RAINBOW FALLS
PHASE 6
TOWN OF CHESTERMERE
ALBERTA
PLAN SHOWING COORDINATE POSITIONS FOR
SUBDIVISION
 AFFECTING PART OF
LOT 1 (IN TWO PARTS)
BLOCK 1
PLAN 031 2884
 WITHIN THE
S.W. 1/4 SEC. 10, TWP. 24, RGE. 28, W.4M.

DAVID R. THOMSON, A.L.S., 2008

SCALE 1 : 1000
 0 5 10 25 50 100m

- NOTES**
- Distances are in metres and decimals thereof.
 - Statutory iron survey post found shown thus
 - Statutory iron survey post placed and marked P105 shown thus
 - Alberta Survey Control Markers (ASCM) shown thus
 - The positions where iron posts are to be placed pursuant to Section 47 of the Surveys Act are numbered thus
 - Area to be registered shown bounded thus and contains 71 lots, 5 MR lots, and road totalling 7.73 Ha.
 - Bearings are grid and are derived from ASCMs No. 594184 & 462101

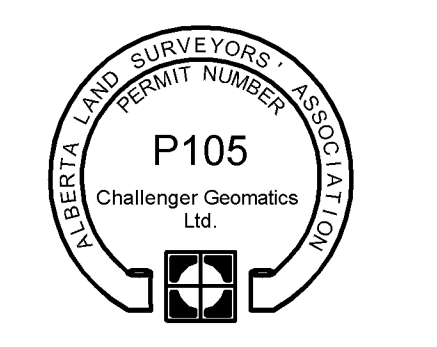
DATUM : NAD83
 PROJECTION : 3° TRANSVERSE MERCATOR CO-ORDINATES
 REFERENCE MERIDIAN : 114°
 COMBINED SCALE FACTOR : 0.999741

SURVEYOR
 David R. Thomson, A.L.S.

The survey was performed from March 12, 2007 to September 20, 2007 in accordance with the provisions of the Surveys Act.

REGISTERED OWNERS
 Rainbow Falls Development Inc.

APPROVING AUTHORITY
 TOWN OF CHESTERMERE
 FILE NO. SB06-008



CERTIFICATE: SECTION 47, SURVEYS ACT
 REGISTERED ON _____
 AS NUMBER _____
 Certifying that all Statutory Monuments were placed in the ground between the dates of _____ and _____ and are positioned in accordance with co-ordinates shown on the plan or on the attached plan instrument except for the following.
 REGISTRAR _____