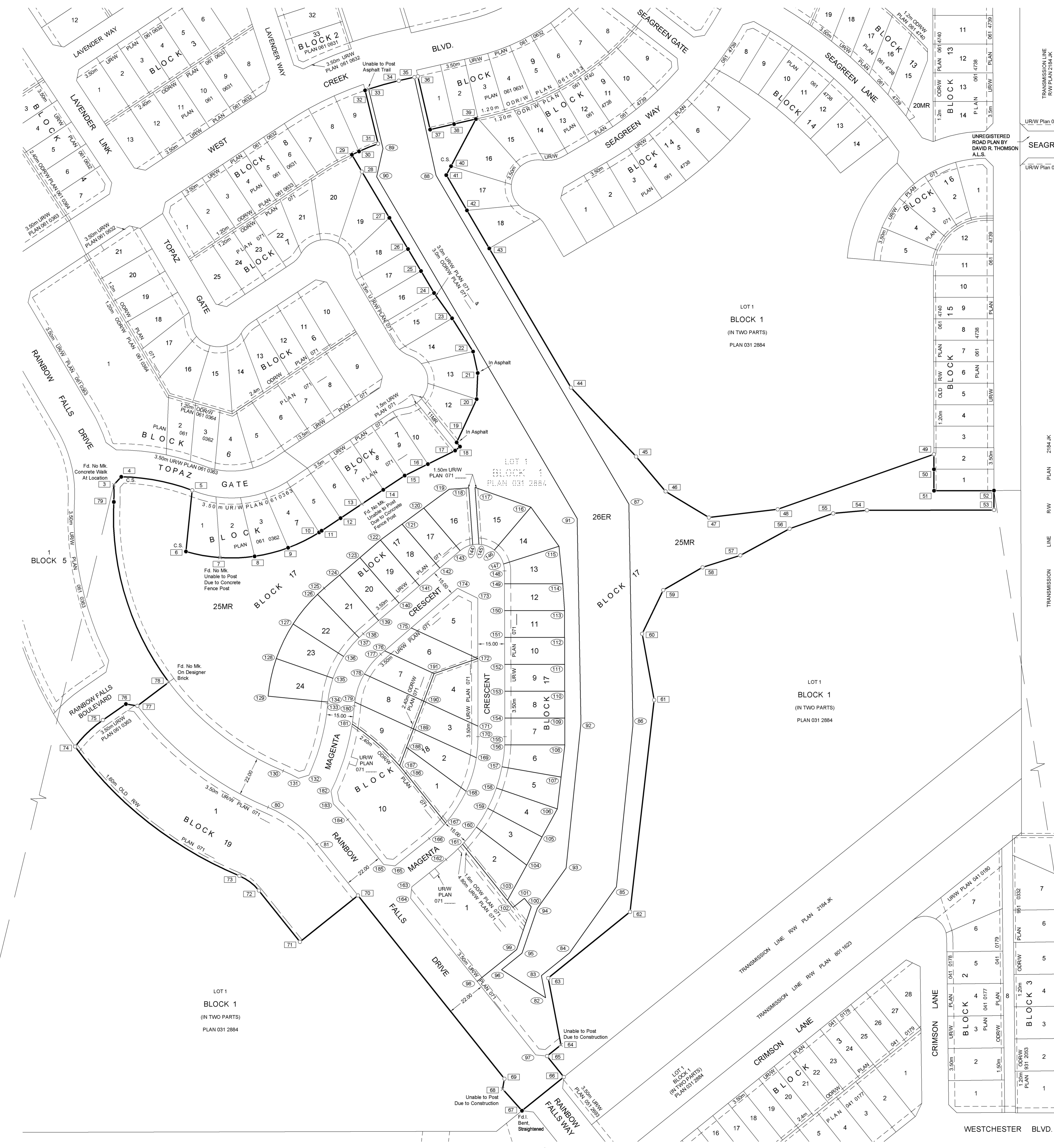


POINT NUMBER	NORTHING	EASTING	POINT NUMBER	NORTHING	EASTING
1	5654456.846	11063.108	97	5654170.261	11619.330
2	5653469.931	12694.257	98	5654211.263	11586.563
3	5654488.560	11383.735	99	5654229.074	11608.674
4	5654493.063	11387.887	100	5654252.896	11616.825
5	5654485.536	11427.507	101	5654257.652	11613.024
6	5654451.349	11423.998	102	5654252.544	11606.683
7	5654447.953	11443.019	103	5654256.543	11603.488
8	5654448.650	11462.328	104	5654276.220	11614.244
9	5654453.410	11481.053	105	5654291.905	11622.818
10	5654462.016	11498.352	106	5654307.591	11631.393
11	5654462.940	11499.770	107	5654325.354	11633.479
12	5654469.958	11510.327	108	5654343.371	11635.595
13	5654477.888	11522.258	109	5654358.367	11635.561
14	5654485.819	11534.189	110	5654373.363	11635.528
15	5654493.749	11546.120	111	5654388.359	11635.495
16	5654500.163	11559.060	112	5654403.355	11635.462
17	5654507.725	11574.316	113	5654418.351	11635.429
18	5654509.917	11577.043	114	5654433.345	11634.374
19	5654512.254	11575.164	115	5654454.243	11632.321
20	5654536.420	11586.353	116	5654476.138	11616.662
21	5654551.042	11586.943	117	5654487.085	11585.435
22	5654563.004	11584.343	118	5654486.847	11581.944
23	5654581.561	11572.600	119	5654486.102	11571.011
24	5654595.688	11562.556	120	5654475.579	11556.755
25	5654607.961	11554.264	121	5654466.649	11544.658
26	5654620.234	11547.971	122	5654457.719	11532.561
27	5654637.681	11537.604	123	5654447.956	11521.178
28	5654663.465	11522.283	124	5654438.194	11509.794
29	5654672.919	11516.666	125	5654430.821	11501.196
30	5654674.791	11520.674	126	5654427.450	11497.479
31	5654679.101	11531.287	127	5654410.857	11483.829
32	5654708.884	11524.053	128	5654391.525	11474.451
33	5654709.525	11525.955	129	5654370.533	11469.869
34	5654714.251	11542.853	130	5654328.820	11478.261
35	5654716.249	11551.562	131	5654324.708	11486.836
36	5654716.697	11553.511	132	5654326.505	11492.693
37	5654686.977	11560.329	133	5654366.343	11503.119
38	5654690.051	11573.727	134	5654367.304	11503.204
39	5654692.848	11585.921	135	5654380.568	11506.100
40	5654666.525	11572.015	136	5654392.783	11512.025
41	5654661.531	11569.377	137	5654403.268	11520.650
42	5654641.835	11580.929	138	5654405.398	11522.999
43	5654620.587	11593.392	139	5654412.771	11531.597
44	5654542.876	11638.973	140	5654422.534	11542.980
45	5654504.345	11675.350	141	5654432.296	11554.364
46	5654484.936	11691.830	142	5654442.058	11565.747
47	5654470.321	11715.997	143	5654451.821	11577.130
48	5654474.891	11754.411	144	5654455.176	11584.124
49	5654505.640	11841.677	145	5654455.416	11587.615
50	5654497.293	11841.698	146	5654452.139	11596.271
51	5654485.296	11841.727	147	5654444.405	11601.354
52	5654485.378	11875.218	148	5654440.471	11601.889
53	5654474.541	11875.245	149	5654433.273	11601.905
54	5654474.367	11804.264	150	5654418.277	11601.938
55	5654472.619	11785.430	151	5654403.281	11601.971
56	5654464.062	11761.088	152	5654388.285	11602.004
57	5654449.204	11733.574	153	5654373.289	11602.037
58	5654442.483	11712.485	154	5654358.293	11602.070
59	5654429.787	11690.506	155	5654347.881	11602.093
60	5654405.398	11678.720	156	5654343.296	11601.983
61	5654368.419	11685.425	157	5654331.102	11600.506
62	5654250.098	11672.023	158	5654319.234	11597.336
63	5654213.100	11626.306	159	5654307.928	11592.535
64	5654175.840	11633.427	160	5654297.405	11586.197
65	5654169.568	11625.642	161	5654287.875	11578.449
66	5654157.854	11635.004	162	5654279.352	11569.228
67	5654139.038	11611.648	163	5654264.077	11550.114
68	5654151.137	11600.787	164	5654257.754	11549.408
69	5654156.891	11601.859	165	5654275.792	11540.752
70	5654259.252	11520.056	166	5654291.067	11559.866
71	5654233.351	11487.645	167	5654299.736	11568.968
72	5654262.007	11464.744	168	5654317.391	11580.461
73	5654270.221	11453.842	169	5654336.160	11586.175
74	5654342.417	11362.083	170	5654347.848	11587.097
75	5654357.234	11377.591	171	5654353.845	11587.084
76	5654366.185	11390.464	172	5654391.583	11587.000
77	5654365.162	11396.869	173	5654425.261	11586.926
78	5654378.383	11414.446	174	5654430.812	11575.669
79	5654479.014	11383.735	175	5654408.636	11549.811
80	5654308.518	11469.801	176	5654395.863	11534.917
81	5654287.908	11497.155	177	5654394.015	11532.761
82	5654202.089	11624.848	178	5654382.952	11523.593
83	5654214.502	11622.476	179	5654367.279	11518.292
84	5654227.215	11638.185	180	5654365.148	11518.068
85	5654264.051	11664.372	181	5654354.986	11516.859
86	5654354.386	11673.606	182	5654317.497	11505.015
87	5654477.847	11671.321	183	5654310.454	11506.290
88	5654661.404	11563.656	184	5654301.639	11514.337
89	5654676.359	11534.011	185	5654276.498	11534.429
90	5654660.667	11530.477	186	5654327.541	11546.748
91	5654469.724	11642.473	187	5654331.683	11543.297
92	5654355.596	11644.586	188	5654341.982	11547.153
93	5654274.612	11636.308	189	5654352.281	11551.009
94	5654251.957	11620.202	190	5654367.732	11556.793
95	5654226.984	11611.657	191	5654383.182	11562.577
96	5654217.789	11600.242			



REGISTRAR LAND TITLES OFFICE
 PLAN NO. **081 1389**
 ENTERED AND REGISTERED ON **March 28, 2008**
 INSTRUMENT No: **081 113 593**
P. Pitman
 A.D. REGISTRAR
SHEET 2 of 2

RAINBOW FALLS
PHASE 5
TOWN OF CHESTERMERE
ALBERTA
PLAN SHOWING COORDINATE POSITIONS FOR
SUBDIVISION
 AFFECTING PART OF
LOT 1 (IN TWO PARTS)
BLOCK 1
PLAN 031 2884
 WITHIN THE
S.W. 1/4 SEC. 10, TWP. 24, RGE. 28, W.4M.

JEFF BLATZ, A.L.S., 2007
SCALE 1 : 1000

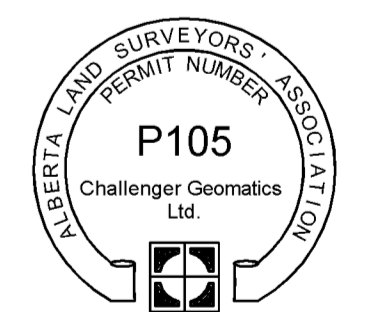
- NOTES**
- Distances are in metres and decimals thereof.
 - Statutory iron survey post found shown thus 1221
 - Statutory iron survey post placed and marked P105 shown thus 1222
 - Temporary traverse points shown thus 1223
 - Alberta Survey Control Markers (ASCM) shown thus
 - The positions where iron posts are to be placed pursuant to Section 47 of the Surveys Act are numbered thus 1224
 - Area to be registered shown bounded thus and contains 35 lots, 1 MR lot, 1 ER lot, and road totalling 8.83 ha.
 - Bearings are grid and are derived from ASCMs 594184 & 462101

DATUM : NAD83
 PROJECTION : 3° TRANSVERSE MERCATOR CO-ORDINATES
 REFERENCE MERIDIAN : 114°
 COMBINED SCALE FACTOR : 0.999741

A.L.S. Alberta Land Surveyor Fd. No Mk. Found No Mark
 SEC. Section ODR/W. Overland Drainage Right
 TWP. Township of Way
 RGE. Range UR/W. Utility Right of Way
 W.M. West of Meridian AR/W. Access Right of Way
 ha. Hectare Re-est. Re-established
 C.S. Counter Sunk Est. Pos. Established Position

SURVEYOR
 Jeff Blatz, A.L.S.

The survey was performed from March 12, 2007 to September 20, 2007 in accordance with the provisions of the Surveys Act.



REGISTERED OWNERS
 Rainbow Falls Development Inc.

APPROVING AUTHORITY
 TOWN OF CHESTERMERE
 FILE NO. SB06-007