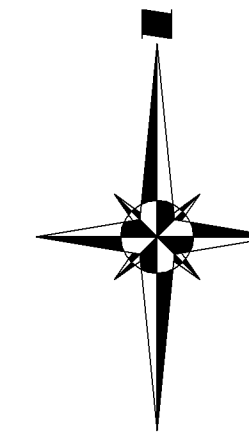


REGISTRAR  
LAND TITLES OFFICE  
  
PLAN NO. 071 6020  
  
ENTERED AND REGISTERED  
ON December 7, 2007  
INSTRUMENT No: 071 593 062  
  
J. E. Little  
A.D., REGISTRAR



### RAINBOW FALLS PHASE 4

### TOWN OF CHESTERMERE ALBERTA

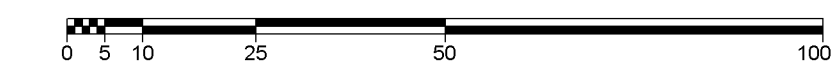
### PLAN SHOWING SURVEY OF UTILITY RIGHT OF WAY

AFFECTING PART OF  
**LOTS 6 THROUGH 21 INCLUSIVE,  
BLOCK 6,  
LOTS 6 THROUGH 10 INCLUSIVE AND  
12 THROUGH 25 INCLUSIVE,  
BLOCK 7,  
PLAN 071 6019**

ALL WITHIN THE  
**S.W. 1/4 SEC. 10, TWP. 24, RGE. 28, W.4M.**

**JEFF BLATZ, A.L.S., 2007**

**SCALE 1 : 1000**



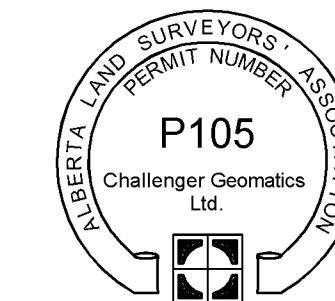
#### NOTES

1. All distances are in metres and decimals thereof.
2. Area to be registered shown bounded thus \_\_\_\_\_
3. Right of Way is 3.5m in perpendicular width unless noted otherwise.

#### SURVEYOR

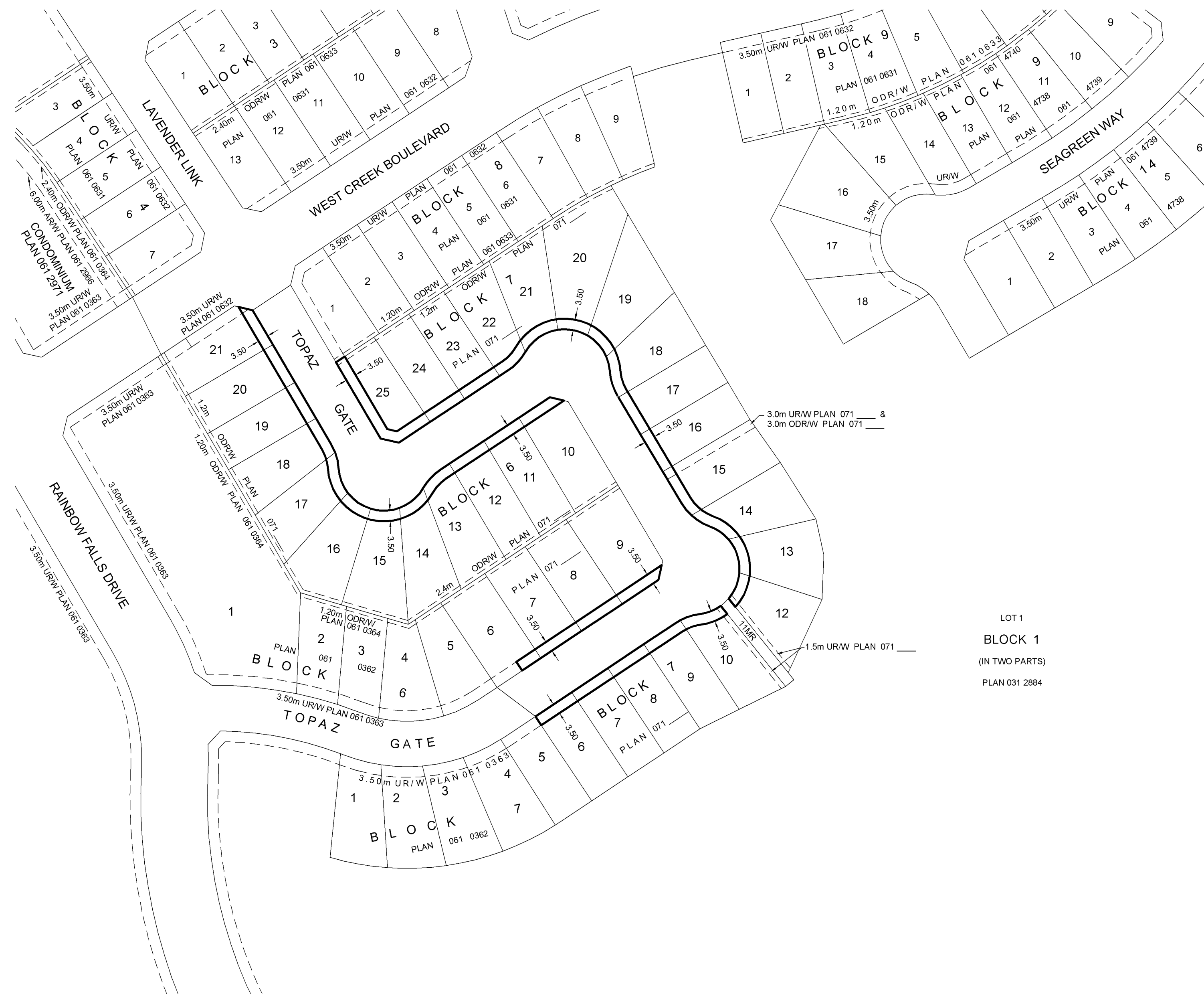
Jeff Blatz, A.L.S.

The survey was performed from March 12, 2007 to April 3, 2007 in accordance with the provisions of the Surveys Act.



#### REQUESTED BY

RAINBOW FALLS DEVELOPMENT INC.



LOT 1  
BLOCK 1  
(IN TWO PARTS)  
PLAN 031 2884