

**REGISTRAR
LAND TITLES OFFICE**

CERTIFICATE: SECTION 47, SURVEYS ACT
REGISTERED ON
AS NUMBER
Certifying that all Statutory Monuments were placed in the ground between the dates of and are positioned in accordance with co-ordinates shown on the plan or on the attached plan instrument except for the following.

REGISTRAR

PLAN NO. **0614738**

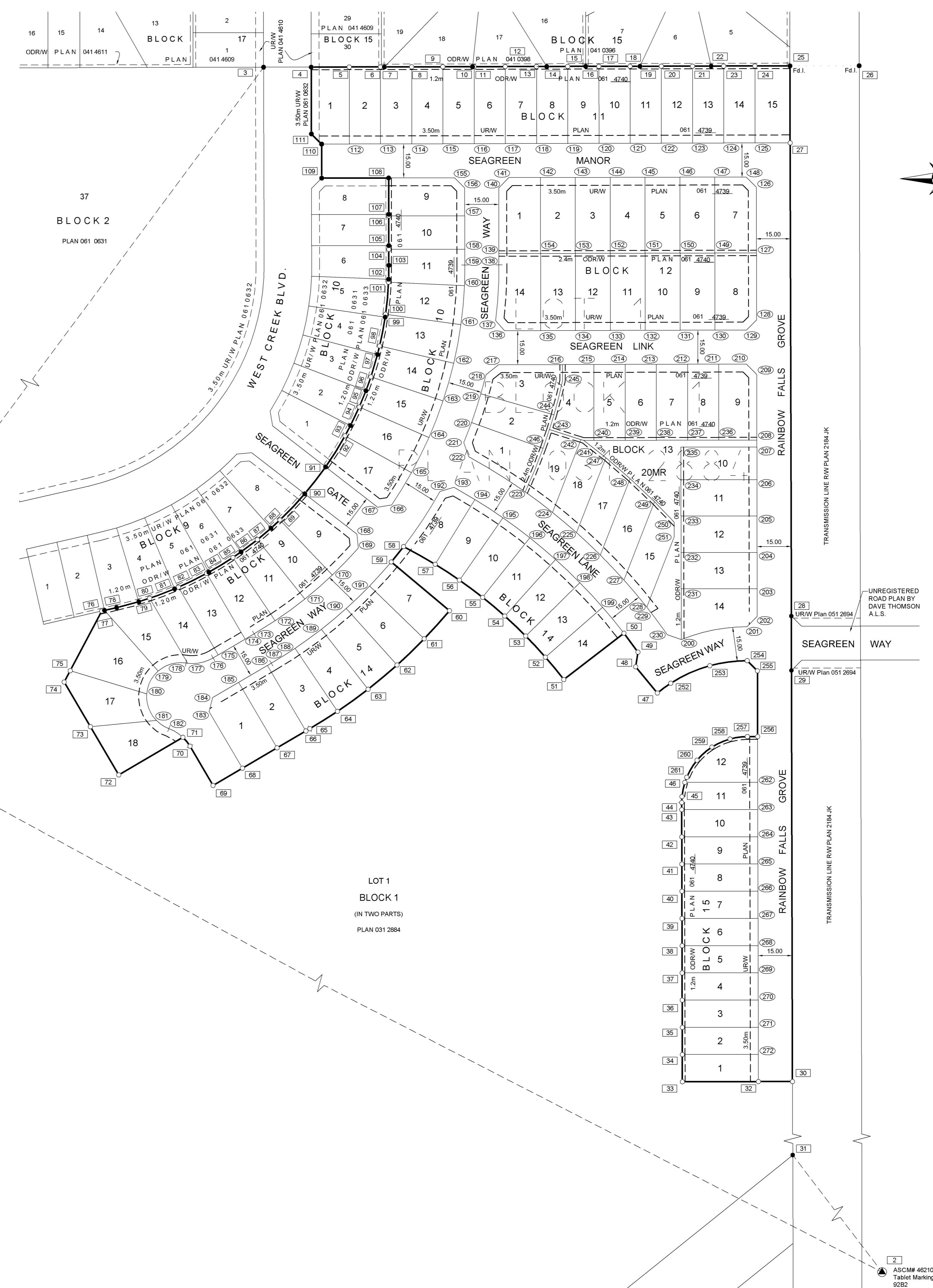
ENTERED AND REGISTERED
ON **December 19, 2006**
INSTRUMENT No: **061 524 778**

G. M. McGeachie
A.D., REGISTRAR

SHEET 2 of 2

POINT NUMBER	NORTHING	EASTING	POINT NUMBER	NORTHING	EASTING	POINT NUMBER	NORTHING	EASTING
1	5654456.846	11063.108	92	5654770.075	11693.072	183	5654648.548	11633.205
2	5653469.931	12694.237	93	5654774.811	11695.496	184	5654654.704	11634.809
3	5654932.696	11657.210	94	5654782.801	11699.373	185	5654661.391	11646.210
4	5654932.635	11678.207	95	5654789.954	11702.302	186	5654668.836	11658.903
5	5654932.677	11694.945	96	5654796.052	11704.479	187	5654669.846	11660.625
6	5654932.711	11708.892	97	5654805.946	11707.414	188	5654676.413	11671.078
7	5654932.716	11710.455	98	5654809.716	11708.346	189	5654684.787	11682.649
8	5654932.717	11722.438	99	5654822.399	11710.759	190	5654693.955	11693.602
9	5654932.780	11736.185	100	5654823.677	11710.942	191	5654703.870	11703.883
10	5654932.813	11749.250	101	5654837.818	11712.244	192	5654745.567	11734.921
11	5654932.815	11749.931	102	5654839.117	11712.299	193	5654747.377	11741.039
12	5654932.850	11763.677	103	5654845.276	11712.407	194	5654742.020	11750.262
13	5654932.864	11779.424	104	5654852.271	11712.390	195	5654733.929	11762.647
14	5654932.896	11791.964	105	5654853.980	11712.386	196	5654725.098	11774.516
15	5654932.919	11791.170	106	5654867.027	11712.354	197	5654715.560	11785.624
16	5654932.939	11799.139	107	5654867.726	11712.352	198	5654705.349	11796.529
17	5654932.953	11804.917	108	5654883.772	11712.314	199	5654694.504	11806.591
18	5654932.968	11818.693	109	5654883.701	11682.821	200	5654680.261	11841.249
19	5654932.999	11823.020	110	5654896.697	11682.785	201	5654685.961	11870.229
20	5654933.023	11832.409	111	5654903.185	11678.276	202	5654690.471	11874.716
21	5654933.057	11846.156	112	5654898.728	11695.031	203	5654702.717	11874.686
22	5654933.078	11854.358	113	5654898.763	11708.777	204	5654718.733	11874.646
23	5654933.078	11859.902	114	5654898.797	11722.524	205	5654734.749	11874.607
24	5654933.126	11874.832	115	5654898.832	11735.270	206	5654750.765	11874.568
25	5654933.165	11889.116	116	5654898.866	11750.016	207	5654765.211	11874.532
26	5654933.242	11919.588	117	5654898.901	11763.763	208	5654768.210	11874.525
27	5654899.217	11889.200	118	5654898.936	11777.509	209	5654797.203	11874.454
28	5654899.629	11889.711	119	5654898.970	11791.256	210	5654801.690	11899.844
29	5654899.639	11889.796	120	5654899.005	11805.002	211	5654801.659	11857.895
30	5654845.415	11890.215	121	5654899.039	11818.748	212	5654801.625	11843.940
31	5654363.683	11890.511	122	5654899.074	11832.495	213	5654801.590	11830.202
32	5654485.378	11875.218	123	5654899.109	11846.241	214	5654801.556	11816.456
33	5654485.296	11841.727	124	5654899.143	11859.988	215	5654801.521	11802.709
34	5654497.293	11841.898	125	5654899.178	11873.734	216	5654801.486	11788.963
35	5654509.292	11841.660	126	5654899.212	11887.482	217	5654801.451	11780.671
36	5654521.286	11841.639	127	5654899.246	11874.323	218	5654797.021	11755.165
37	5654533.283	11841.610	128	5654821.196	11874.395	219	5654788.634	11752.938
38	5654545.280	11841.580	129	5654816.686	11869.907	220	5654775.932	11748.815
39	5654557.277	11841.551	130	5654816.651	11859.073	221	5654767.145	11745.407
40	5654569.274	11841.521	131	5654816.613	11840.717	222	5654760.862	11747.602
41	5654581.271	11841.492	132	5654816.574	11825.361	223	5654745.389	11772.424
42	5654593.267	11841.462	133	5654816.535	11810.005	224	5654736.327	11784.490
43	5654605.264	11841.433	134	5654816.497	11794.649	225	5654727.390	11795.090
44	5654608.410	11841.425	135	5654816.458	11779.293	226	5654717.548	11805.544
45	5654611.035	11841.538	136	5654816.418	11763.383	227	5654705.546	11815.954
46	5654617.265	11842.749	137	5654816.379	11749.468	228	5654694.589	11826.005
47	5654656.690	11830.667	138	5654845.393	11760.894	229	5654692.216	11827.854
48	5654666.260	11821.126	139	5654850.403	11760.882	230	5654682.383	11835.065
49	5654674.722	11822.122	140	5654879.396	11760.812	231	5654702.635	11841.194
50	5654683.066	11815.973	141	5654883.906	11765.300	232	5654718.651	11841.155
51	5654693.694	11815.943	142	5654883.940	11773.123	233	5654734.667	11841.116
52	5654672.484	11781.357	143	5654883.979	11794.479	234	5654750.683	11841.077
53	5654681.831	11772.684	144	5654884.018	11809.835	235	5654765.127	11841.041
54	5654690.631	11763.458	145	5654884.056	11825.191	236	5654768.168	11857.779
55	5654698.852	11753.712	146	5654884.095	11840.547	237	5654768.133	11844.033
56	5654706.463	11743.483	147	5654884.134	11855.903	238	5654768.099	11830.267
57	5654713.436	11732.939	148	5654884.168	11869.742	239	5654768.064	11816.540
58	5654721.235	11718.863	149	5654850.642	11855.988	240	5654768.030	11802.794
59	5654714.484	11713.442	150	5654850.604	11840.632	241	5654768.018	11798.246
60	5654692.962	11739.102	151	5654850.565	11825.276	242	5654768.413	11797.011
61	5654690.597	11727.967	152	5654850.527	11809.920	243	5654772.851	11783.140
62	5654693.045	11715.969	153	5654850.488	11794.564	244	5654779.348	11785.116
63	5654658.384	11703.228	154	5654850.449	11779.208	245	5654794.635	11788.980
64	5654648.608	11689.748	155	5654883.845	11741.306	246	5654764.550	11780.313
65	5654646.958	11677.570	156	5654879.358	11745.816	247	5654760.409	11807.975
66	5654639.948	11675.848	157	5654867.111	11745.845	248	5654751.220	11818.683
67	5654632.502	11663.154	158	5654852.355	11745.862	249	5654741.035	11829.422
68	5654623.540	11647.873	159	5654845.356	11745.898	250	5654731.969	11838.123
69	5654615.952	11634.938	160	5654836.282	11745.701	251	5654725.694	11838.139
70	5654633.246	11624.795	161	5654819.075	11744.115	252	5654661.001	11836.567
71	5654637.178	11621.677	162	5654802.087	11740.956	253	5654668.715	11853.801
72	5654620.587	11593.392	163	5654785.460	11736.251	254	5654670.969	11870.265
73	5654641.835	11590.929	164	5654769.336	11730.038	255	5654686.177	11874.774
74	5654661.531	11569.377	165	5654753.851	11722.371	256	5654637.484	11874.845
75	5654666.525	11572.015	166	5654739.568	11713.608	257	5654637.473	11870.347
76	5654692.848	11585.921	167	5654738.627	11707.485	258	5654636.430	11862.708
77	5654693.125	11587.126	168	5654726.769	11698.305	259	5654632.850	11854.711
78	5654694.355	11592.487	169	5654720.695	11699.928	260	5654627.045	11848.148
79	5654696.926	11602.228	170	5654708.726	11687.490	261	5654619.545	11843.619
80	5654698.440	11607.002	171	5654698.170	11675.399	262	5654617.343	11874.895
81	5654702.607	11618.027	172	5654688.583	11662.301	263	5654605.346	11874.924
82	5654703.332	11619.716	173	5654682.782	11653.038	264	5654593.350	11874.954
83	5654709.422	11632.127	174	5654680.475	11644.106	265	5654581.353	11874.863
84	5654709.968	11633.116	175	5654673.500	11637.214	266	5654569.356	11875.013
85	5654716.438	11643.706	176	5654672.165	11634.937	267	5654557.359	11875.042
86	5654718.924	11647.317	177	5654669.807	11623.796	268	5654545.362	11875.071
87	5654724.316	11654.470	178	5654669.913	11623.015	269	5654533.365	11875.101
88	5654729.368	11660.462	179	5654666.348	11610.747	270	5654521.368	11875.130
89	5654732.961	11664.407	180	5654656.314	11600.721	271	5654509.372	11875.160
90	5654744.536	11675.353	181	5654644.822	11609.941	272	5654497.375	11875.189
91	5654756.394	11684.533	182	5654641.029	11615.488			

ASCM# 594184
Tablet Markings:
594184



**RAINBOW FALLS
PHASE 3**

**TOWN of CHESTERMERE
ALBERTA**

**PLAN SHOWING COORDINATE POSITIONS FOR
SUBDIVISION**

AFFECTING PART OF
**LOT 1 (IN TWO PARTS)
BLOCK 1
PLAN 031 2884**

WITHIN THE
S.W. 1/4 SEC. 10, TWP. 24, RGE. 28, W.4M.

JEFF BLATZ, A.L.S., 2006

SCALE 1 : 1000

- NOTES**
- Distances are in metres and decimals thereof.
 - Statutory iron survey post found shown thus
 - Statutory iron survey post placed and marked P105 shown thus
 - Alberta Survey Control Markers (ASCM) shown thus
 - The positions where iron posts are to be placed pursuant to Section 47 of the Surveys Act are numbered thus
 - Area to be registered shown bounded thus and contains 94 lots, and 1 MR lot totalling, 6.71 Ha.
 - Bearings are grid and are derived from ASCM's No. 594184 & 462101

DATUM : NAD83
PROJECTION : 3° TRANSVERSE MERCATOR CO-ORDINATES
REFERENCE MERIDIAN : 114°
COMBINED SCALE FACTOR : 0.999741

SURVEYOR
Jeff Blatz, A.L.S.

The survey was performed from June 19, 2006 to August 24, 2006 in accordance with the provisions of the Surveys Act.

REGISTERED OWNERS
Rainbow Falls Development Inc.

APPROVING AUTHORITY
TOWN of CHESTERMERE
FILE NO. SB-06-004