

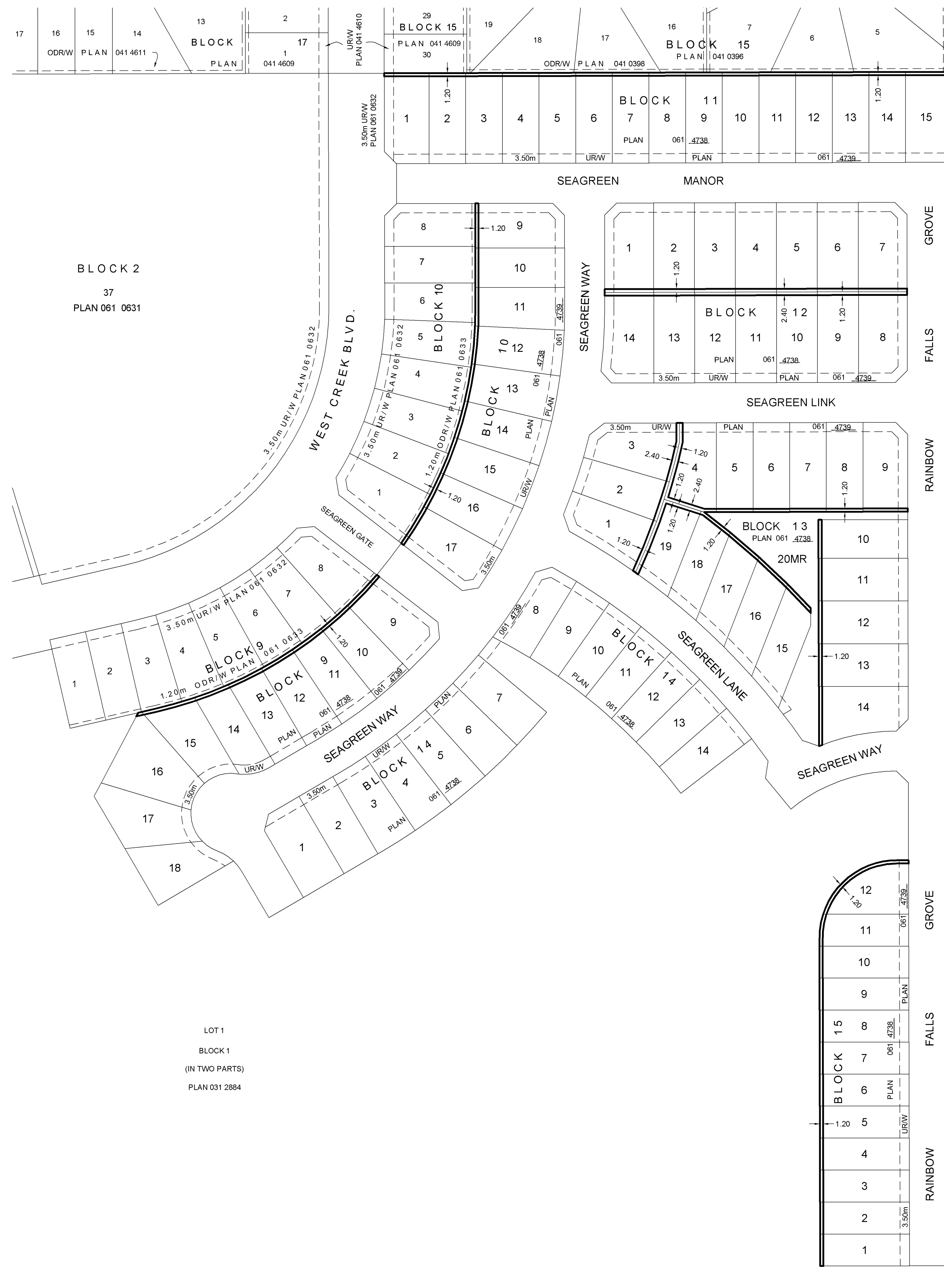
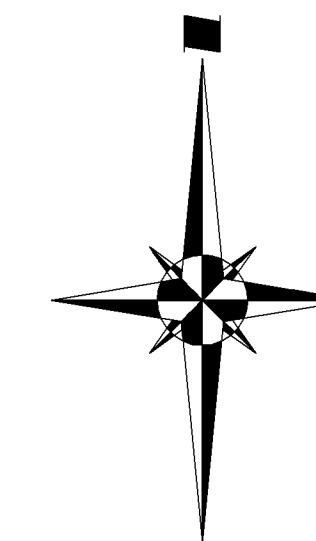
REGISTRAR
LAND TITLES OFFICE

PLAN NO. 0614740

ENTERED AND REGISTERED
ON December 19, 2006

INSTRUMENT No: 061 524 781

G. M. McGeachie
A.D., REGISTRAR

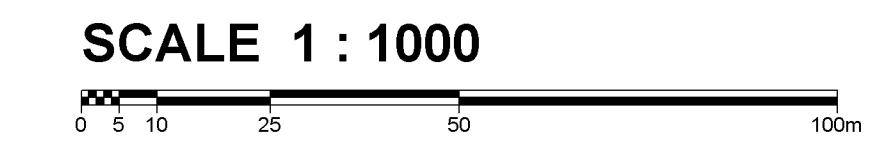


RAINBOW FALLS
PHASE 3
TOWN OF CHESTERMERE
ALBERTA
PLAN SHOWING
OVERLAND DRAINAGE RIGHT OF WAY

AFFECTING PART OF
LOTS 9-16 INCLUSIVE, BLOCK 9
LOTS 9-17 INCLUSIVE, BLOCK 10
LOTS 1-15 INCLUSIVE, BLOCK 11
LOTS 1-14 INCLUSIVE, BLOCK 12
LOTS 1-19 INCLUSIVE, BLOCK 13
LOTS 1-12 INCLUSIVE, BLOCK 15
PLAN 061 4738

WITHIN THE
S.W. 1/4 SEC. 10, TWP. 24, RGE. 28, W.4M.

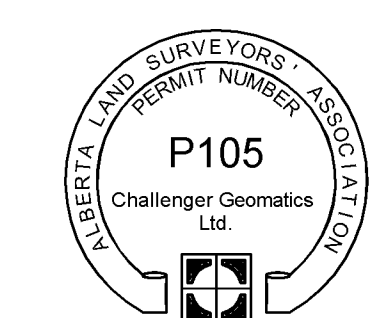
JEFF BLATZ, A.L.S., 2006



- NOTES**
1. All distances are in metres and decimals thereof.
 2. Area to be registered shown bounded thus _____
 3. Right of Way is 1.2m in perpendicular width unless noted otherwise

SURVEYOR
Jeff Blatz, A.L.S.

The survey was performed from June 19, 2006 to August 24, 2006 in accordance with the provisions of the Surveys Act.



REQUESTED BY
RAINBOW FALLS DEVELOPMENT INC.