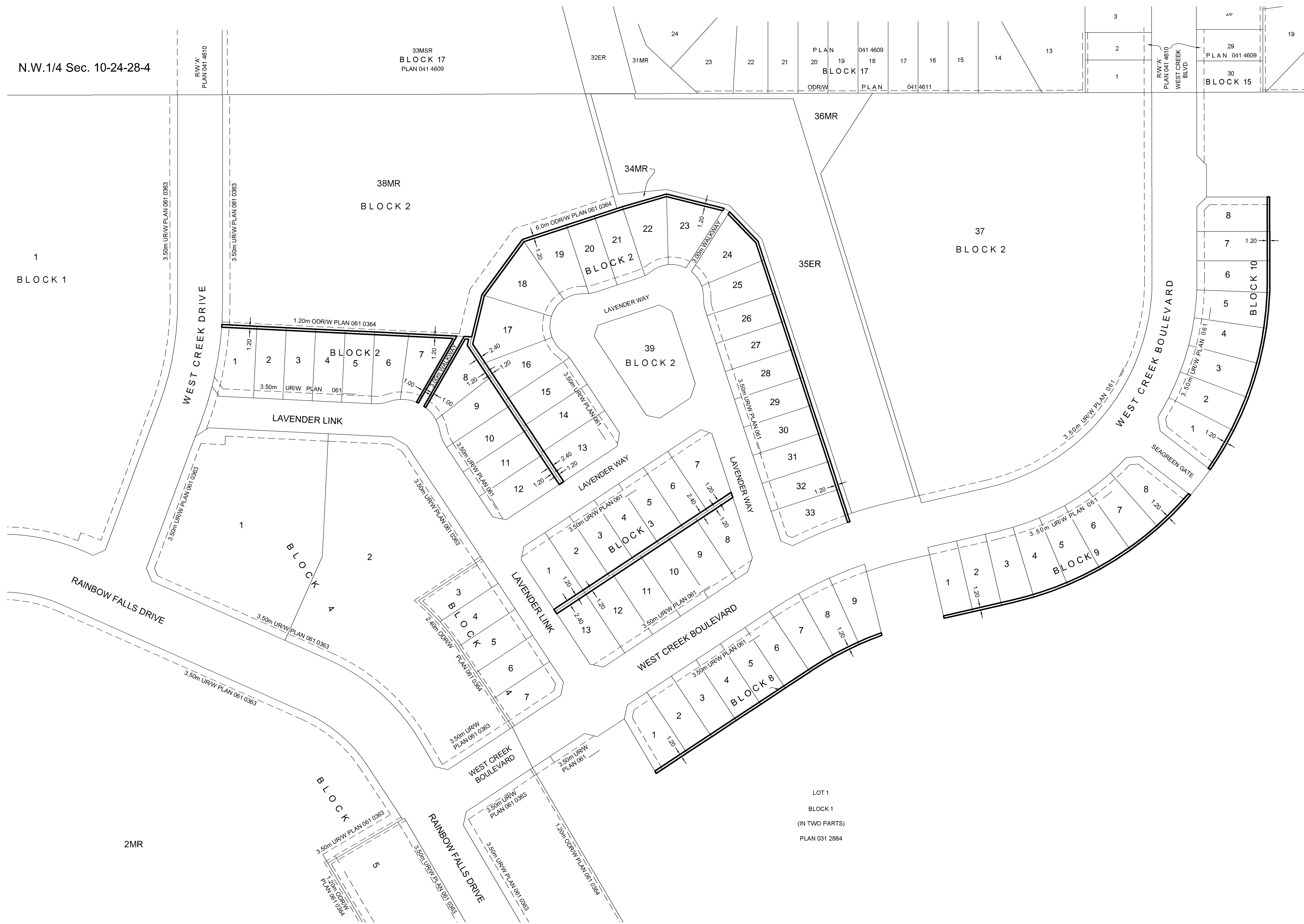


N.W. 1/4 Sec. 10-24-28-4



**TOWN of CHESTERMERE  
ALBERTA**

**PLAN SHOWING SURVEY OF  
OVERLAND DRAINAGE RIGHT OF WAY**

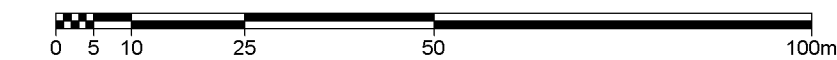
AFFECTING

**LOTS 1-33 INCLUSIVE, BLOCK 2,  
LOTS 1-13 INCLUSIVE, BLOCK 3,  
LOTS 1-9 INCLUSIVE, BLOCK 8,  
LOTS 1-8 INCLUSIVE, BLOCK 9,  
LOTS 1-8 INCLUSIVE, BLOCK 10  
PLAN 061 0631**

ALL WITHIN THE  
**S.W. 1/4 SEC. 10, TWP. 24, RGE. 28, W.4M.**

**RON ROBINSON, A.L.S., 2006**

**SCALE 1 : 1000**



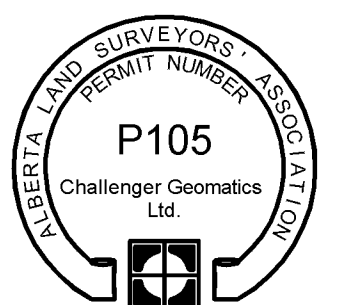
**NOTES**

1. Distances are in metres and decimals thereof.
2. Area to be registered shown bounded thus and contains, 0.147 ha.
3. Right of Way is 1.2m in perpendicular width unless noted otherwise

**SURVEYOR**

Ron Robinson, A.L.S.

The survey was performed from October 29, 2005 to November 9, 2005 in accordance with the provisions of the Surveys Act.



**REGISTERED OWNER**

RAINBOW FALLS DEVELOPMENT INC.

**REQUESTED BY**

TOWN of CHESTERMERE

LOT 1  
BLOCK 1  
(IN TWO PARTS)  
PLAN 031 2884