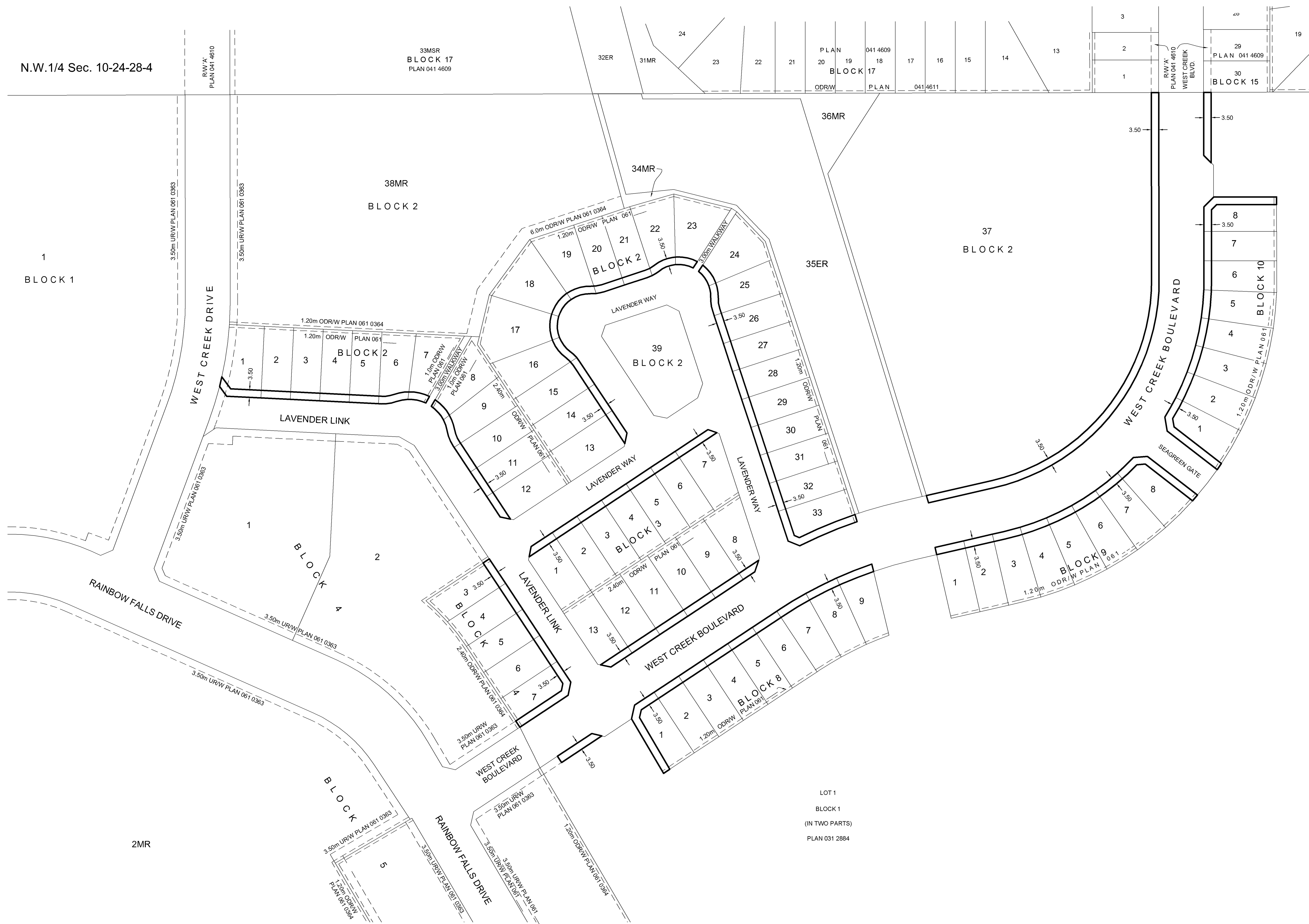


N.W. 1/4 Sec. 10-24-28-4



**TOWN of CHESTERMERE
ALBERTA**

**PLAN SHOWING SURVEY OF
UTILITY RIGHT OF WAY**

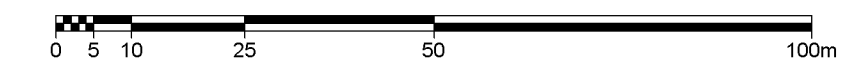
AFFECTING
LOT 1, BLOCK 1, PLAN 031 2884

AND
**LOTS 1-33 INCLUSIVE & 37, BLOCK 2,
LOTS 1-13 INCLUSIVE, BLOCK 3,
LOTS 3-7 INCLUSIVE, BLOCK 4,
LOTS 1-9 INCLUSIVE, BLOCK 8,
LOTS 1-8 INCLUSIVE, BLOCK 9,
LOTS 1-8 INCLUSIVE, BLOCK 10
PLAN 061 0631**

ALL WITHIN THE
S.W. 1/4 SEC. 10, TWP. 24, RGE. 28, W.4M.

RON ROBINSON, A.L.S., 2006

SCALE 1 : 1000



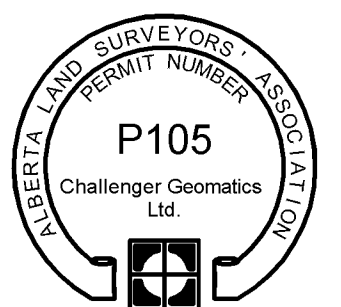
NOTES

- Distances are in metres and decimals thereof.
- Area to be registered shown bounded thus and contains .054 ha.
- Right of Way is 3.5m in perpendicular width unless noted otherwise

SURVEYOR

Ron Robinson, A.L.S.

The survey was performed from October 29, 2005 to November 9, 2005 in accordance with the provisions of the Surveys Act.



REGISTERED OWNER

RAINBOW FALLS DEVELOPMENT INC.

REQUESTED BY

TOWN of CHESTERMERE

LOT 1
BLOCK 1
(IN TWO PARTS)
PLAN 031 2884