

**RAINBOW FALLS**

**TOWN of CHESTERMERE**  
**ALBERTA**

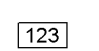
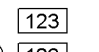
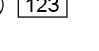


**PLAN SHOWING COORDINATE POSITIONS FOR**  
**SUBDIVISION**

AFFECTING PART OF  
**LOT 1, BLOCK 1**  
**PLAN 031 2884**  
WITHIN THE  
**S.W. 1/4 SEC. 10, TWP. 24, RGE. 28, W.4M.**

**RON ROBINSON, A.L.S., 2006**

**SCALE 1 : 1000**

**NOTES**

- Distances are in metres and decimals thereof.
- Statutory iron survey post found shown thus 
- Statutory iron survey post placed and marked P105 shown thus 
- Alberta Survey Control Markers (ASCM) shown thus 
- The positions where iron posts are to be placed pursuant to Section 47 of the Surveys Act are numbered thus 
- Area to be registered shown bounded thus 
- and contains 77 lots, 3 MR lots, 1 ER lot and road, totalling 9.49 ha.
- Bearings are grid and are derived from ASCM's No. 594184 & 462101

DATUM : NAD83  
PROJECTION : 3° TRANSVERSE MERCATOR CO-ORDINATES  
REFERENCE MERIDIAN : 114°  
COMBINED SCALE FACTOR : 0.999741

**SURVEYOR**

Ron Robinson, A.L.S.

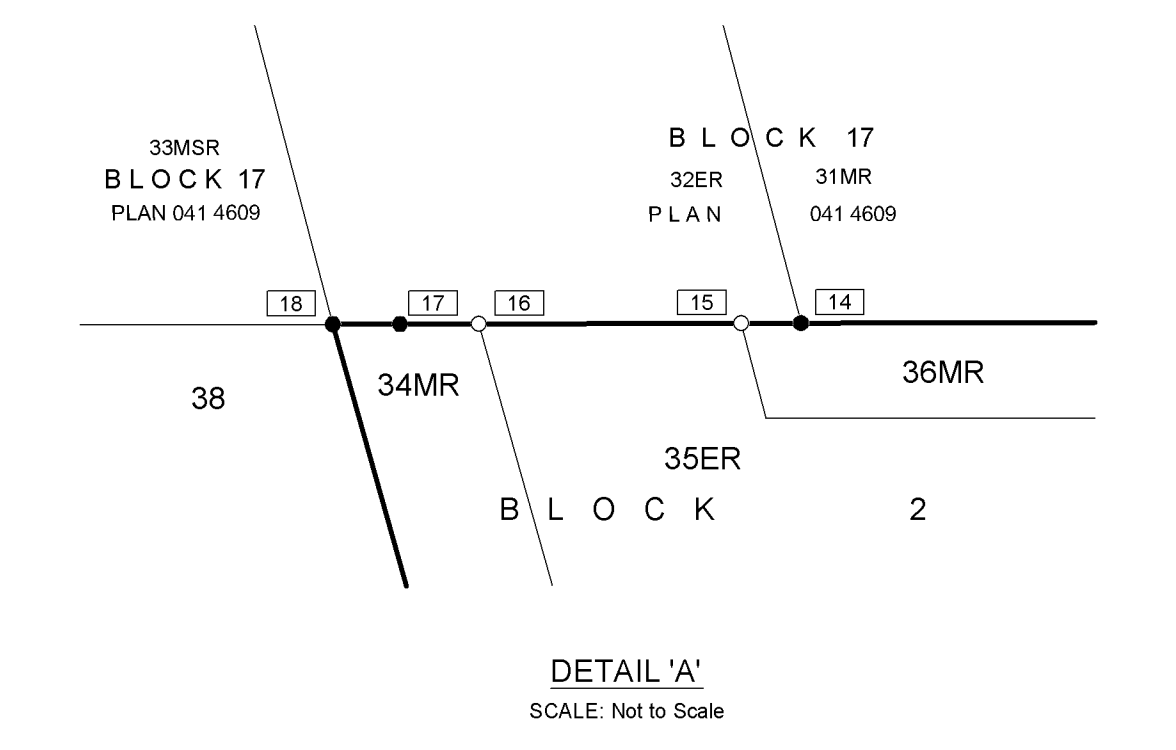
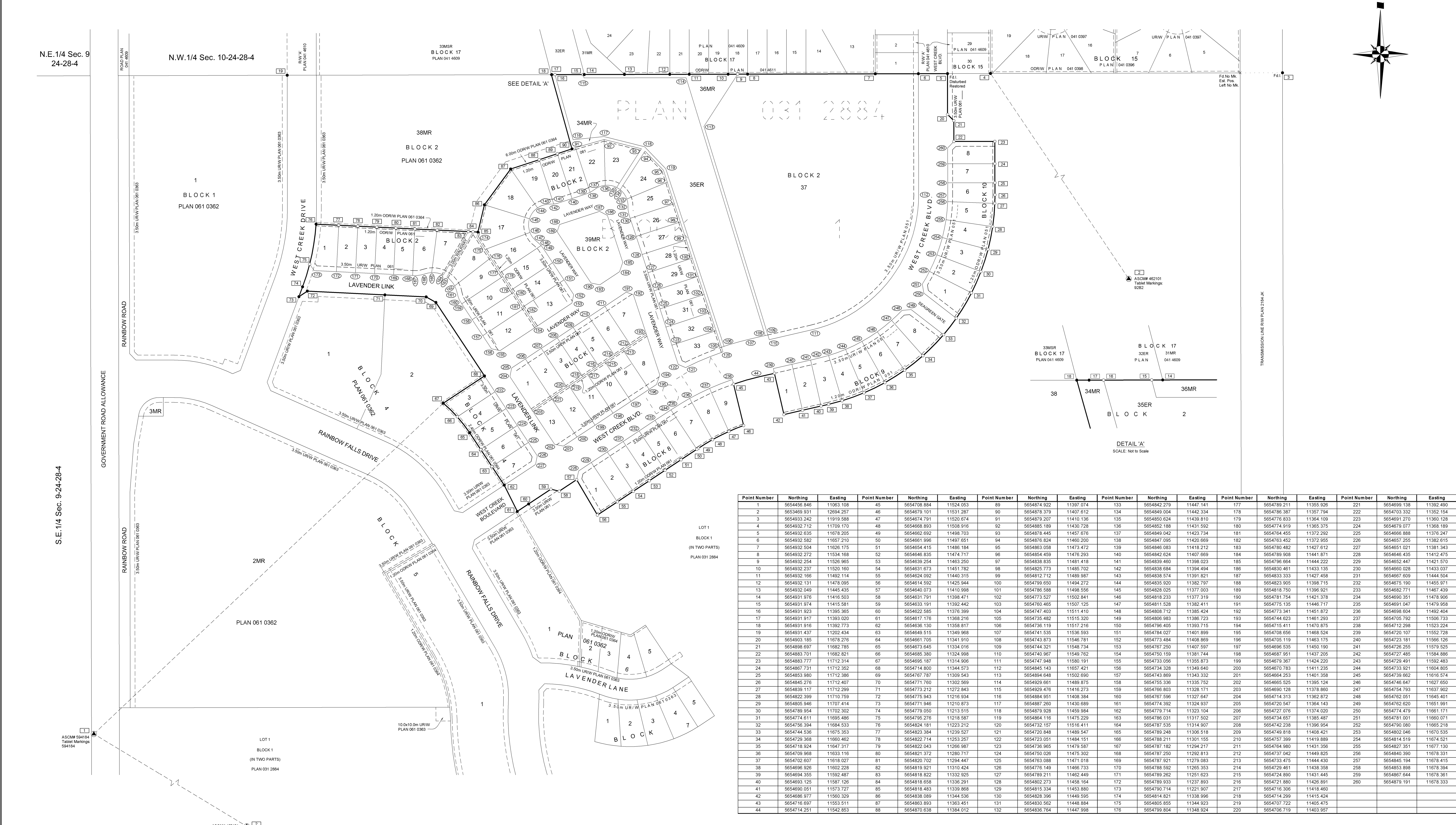
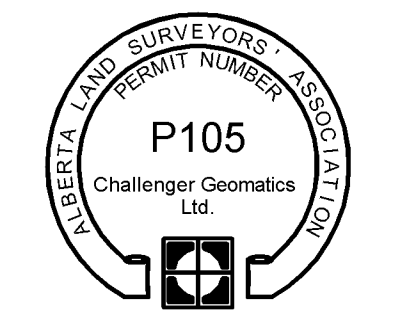
The survey was performed from October 29, 2005 to November 9, 2005 in accordance with the provisions of the Surveys Act.

**REGISTERED OWNERS**

Rainbow Falls Development Inc.

**APPROVING AUTHORITY**

TOWN of CHESTERMERE  
FILE NO. 04-11-29 (B2)  
FILE NO. 04-11-29 (B3)



Point Number	Northing	Easting	Point Number	Northing	Easting	Point Number	Northing	Easting	Point Number	Northing	Easting	Point Number	Northing	Easting
1	5654456.846	11063.108	45	5654708.884	11524.053	89	5654874.922	11397.074	133	5654842.279	11447.141	177	5654789.211	11355.926
2	5653489.251	12894.257	46	5654679.101	11531.287	90	5654879.379	11407.812	134	5654849.004	11442.334	178	5654786.307	11357.794
3	5654833.242	11915.888	47	5654674.791	11520.074	91	5654879.307	11410.136	135	5654852.624	11439.810	179	5654774.833	11364.109
4	5654932.712	11709.170	48	5654668.893	11508.916	92	5654885.189	11430.728	136	5654852.188	11431.592	180	5654774.919	11365.375
5	5654932.635	11678.205	49	5654662.892	11498.703	93	5654878.445	11457.676	137	5654849.402	11423.734	181	5654764.455	11372.292
6	5654932.582	11657.210	50	5654661.998	11497.651	94	5654876.824	11460.200	138	5654847.095	11420.869	182	5654763.452	11372.955
7	5654932.504	11628.175	51	5654654.415	11486.184	95	5654863.058	11473.472	139	5654846.083	11418.212	183	5654780.482	11427.612
8	5654932.272	11534.168	52	5654646.835	11474.717	96	5654854.459	11476.293	140	5654842.624	11407.669	184	5654789.908	11441.871
9	5654932.254	11526.965	53	5654639.254	11463.250	97	5654838.835	11481.418	141	5654839.460	11398.023	185	5654796.664	11444.222
10	5654932.237	11520.160	54	5654631.673	11451.192	98	5654825.773	11485.702	142	5654835.894	11394.494	186	5654830.461	11433.135
11	5654932.166	11492.114	55	5654624.092	11440.315	99	5654812.712	11489.987	143	5654833.574	11391.621	187	5654833.333	11427.458
12	5654932.131	11478.065	56	5654616.592	11428.944	100	5654799.650	11494.272	144	5654835.920	11382.797	188	5654823.905	11398.715
13	5654932.049	11445.435	57	5654610.073	11410.998	101	5654796.588	11498.556	145	5654828.025	11377.003	189	5654818.750	11396.921
14	5654931.976	11416.503	58	5654603.791	11398.471	102	5654773.527	11502.841	146	5654818.233	11377.319	190	5654781.754	11421.378
15	5654931.974	11415.581	59	5654603.191	11392.442	103	5654760.465	11507.125	147	5654811.528	11382.411	191	5654775.135	11446.717
16	5654931.923	11395.365	60	5654622.585	11376.399	104	5654747.403	11511.410	148	5654808.712	11385.424	192	5654773.341	11451.872
17	5654931.917	11393.020	61	5654617.176	11368.216	105	5654735.482	11515.320	149	5654806.983	11386.723	193	5654744.623	11461.293
18	5654931.916	11392.773	62	5654616.130	11358.817	106	5654736.119	11517.216	150	5654796.405	11383.715	194	5654715.111	11470.875
19	5654931.437	11202.434	63	5654609.516	11349.968	107	5654741.535	11516.593	151	5654784.027	11401.899	195	5654708.566	11468.524
20	5654903.185	11678.276	64	5654601.705	11341.910	108	5654743.873	11546.781	152	5654773.484	11408.869	196	5654705.119	11463.175
21	5654898.697	11682.785	65	5654603.645	11334.016	109	5654744.321	11548.734	153	5654767.250	11407.597	197	5654696.535	11450.190
22	5654883.701	11682.821	66	5654603.380	11324.998	110	5654740.967	11549.762	154	5654750.159	11381.744	198	5654687.951	11437.205
23	5654883.777	11712.314	67	5654609.187	11314.906	111	5654747.403	11580.191	155	5654733.056	11355.873	199	5654679.967	11424.220
24	5654867.731	11712.352	68	5654714.800	11344.573	112	5654845.143	11607.421	156	5654734.328	11349.640	200	5654670.783	11411.235
25	5654853.980	11712.386	69	5654707.787	11339.527	113	5654845.369	11602.890	157	5654735.369	11349.332	201	5654730.558	11401.358
26	5654845.276	11712.407	70	5654711.780	11302.589	114	5654829.681	11489.875	158	5654752.336	11326.752	202	5654685.850	11395.124
27	5654838.117	11712.299	71	5654713.212	11272.843	115	5654829.476	11476.273	159	5654766.803	11328.171	203	5654690.128	11378.860
28	5654822.399	11710.759	72	5654775.943	11216.934	116	5654884.951	11408.384	160	5654767.596	11327.647	204	5654714.313	11362.872
29	5654805.946	11707.414	73	5654771.946	11130.873	117	5654887.260	11430.689	161	5654770.392	11324.937	205	5654720.547	11364.143
30	5654789.954	11702.302	74	5654779.050	11213.515	118	5654879.928	11459.984	162	5654779.714	11323.104	206	5654727.076	11374.020
31	5654774.611	11699.486	75	5654795.276	11218.587	119	5654864.116	11475.229	163	5654786.031	11317.502	207	5654734.657	11385.487
32	5654736.394	11684.533	76	5654824.181	11223.212	120	5654732.157	11516.411	164	5654787.535	11314.907	208	5654742.238	11396.954
33	5654744.536	11674.353	77	5654825.384	11239.527	121	5654720.648	11489.547	165	5654789.248	11308.818	209	5654749.819	11408.421
34	5654729.368	11660.462	78	5654822.714	11253.257	122	5654723.051	11484.151	166	5654788.211	11301.155	210	5654757.389	11419.889
35	5654718.924	11647.317	79	5654822.043	11266.987	123	5654736.965	11479.587	167	5654787.182	11294.217	211	5654764.980	11431.356
36	5654709.968	11633.116	80	5654821.372	11280.717	124	5654750.026	11475.302	168	5654787.250	11292.813	212	5654737.042	11449.825
37	5654702.607	11618.027	81	5654820.702	11294.447	125	5654763.088	11471.018	169	5654787.921	11279.083	213	5654733.475	11444.430
38	5654698.926	11602.228	82	5654819.921	11310.424	126	5654776.149	11466.733	170	5654788.592	11265.353	214	5654729.461	11438.358
39	5654694.355	11592.487	83	5654818.822	11332.925	127	5654789.211	11462.449	171	5654789.232	11251.623	215	5654724.890	11431.445
40	5654693.125	11587.126	84	5654818.558	11336.291	128	5654802.273	11336.291	172	5654789.963	11237.893	216	5654721.880	11426.891
41	5654690.051	11573.727	85	5654818.483	11339.868	129	5654815.334	11453.987	173	5654790.714	11221.907	217	5654716.306	11416.460
42	5654686.977	11560.329	86	5654818.089	11344.536	130	5654828.396	11440.595	174	5654814.821	11538.996	218	5654714.299	11415.424
43	5654716.697	11553.511	87	5654863.893	11363.451	131	5654830.502	11448.884	175	5654805.855	11344.923	219	5654707.722	11405.475
44	5654714.251	11542.853	88	5654870.638	11384.012	132	5654836.764	11447.988	176	5654799.804	11348.924	220	5654706.719	11403.957